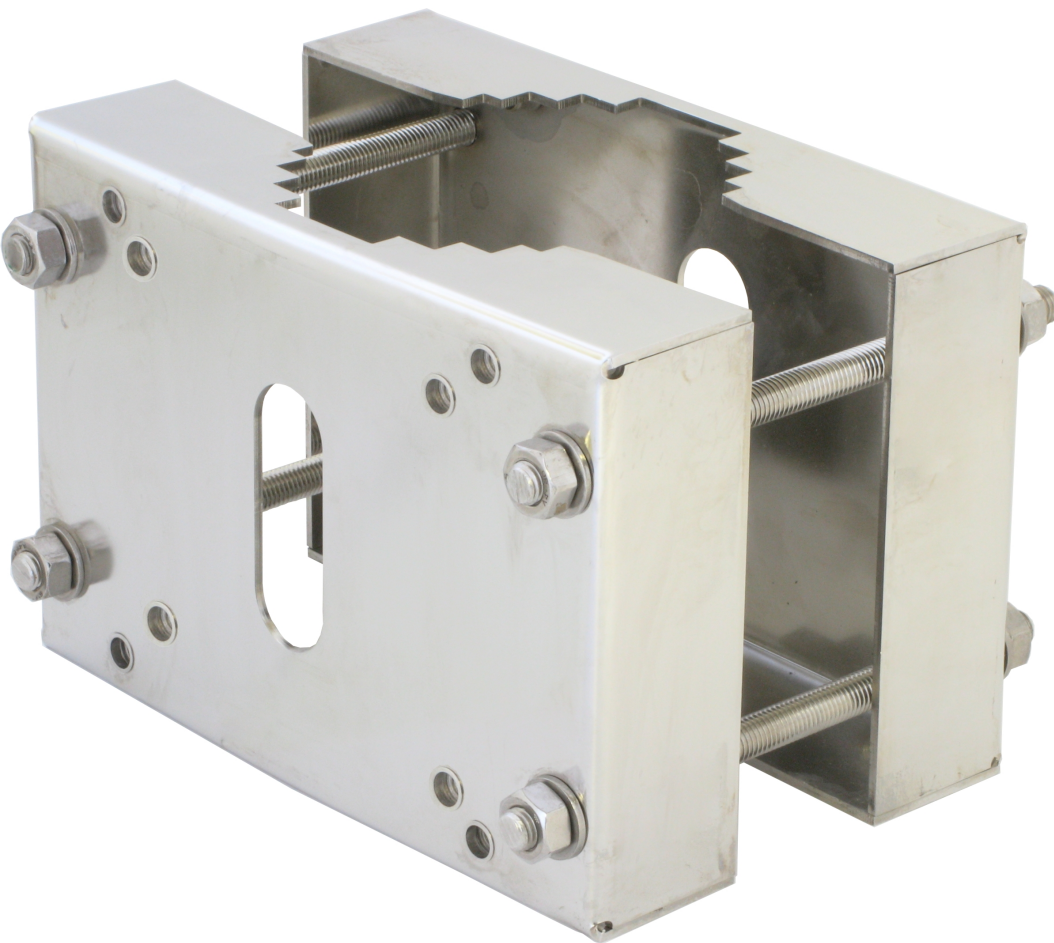


Ex Pole Mount XF40

Explosion-protected pole mount

Ex Pole Mount XF40 is an electropolished 316L stainless steel pole mount. Together with the required Ex Wall Mount XF40, it allows the fixed explosion-protected network cameras to be mounted on poles. It is designed for poles with a diameter between 90 to 120 mm (3.5 to 4.7 in) in diameter. The pole mount is ideal for onshore, offshore, marine and heavy industrial applications.

- > [Electropolish stainless steel finish \(SS 316L\)](#)
- > [For poles with 90-120 mm \(3.5-4.7 in\) in diameter](#)



Ex Pole Mount XF40

General

| | |
|-----------------------------|--|
| Compatible products | Explosion-protected network cameras |
| Mounting | Ø90–120 mm (Ø3.5–4.7 in) poles |
| Material | Electropolish SS 316L stainless steel |
| Maximum load | 55 kg (121 lb) |
| Dimensions | 170 x 250 x 200 mm (6.7 x 9.8 x 7.9 in) |
| Weight | 4.2 kg (9.3 lb) |
| Required accessories | Ex Wall Mount XF40 |
| Warranty | Axis 3-year warranty, see www.axis.com/warranty |

Environmental responsibility:
www.axis.com/environmental-responsibility