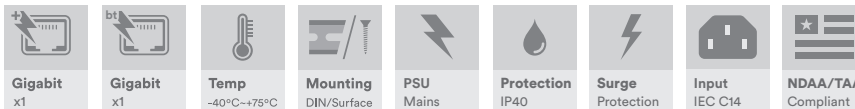


# SNI-1PI-PS 1 CHANNEL INDUSTRIAL MAINS POWERED 1Gb 30/60/90W POE INJECTOR

WISeNET

## Industrial Ethernet Solutions

Wisenet industrial PoE injectors provide 30W, 60W or 90W of power injection on one 1Gb Ethernet port. Provided with integrated mains power input and robust surge protection as standard ensures maximum system reliability.



[ SNI-1PI-PS ]

### OVERVIEW

Designed in a compact DIN rail or wall mount housing, the Wisenet series industrial Power over Ethernet (PoE) injectors are ideally suited for providing power to remote edge network devices.

Supporting both IEEE802.3at 30W and IEEE802.3bt 60/90W they are suitable for powering the latest high powered PoE devices over a wide industrial operating temperature range.

Fitted with an integrated fully industrial mains power supply supporting 30W, 60W or 90W PoE power.

Designed as standard single channel injectors supporting 1Gb Ethernet.

Robust surge protection ensures maximum operating reliability and the highest levels of performance.

### FEATURES

- Compact size – ideal for confined spaces, including camera poles and roadside cabinets
- -40°C to +75°C temperature maintains performance in extreme conditions
- Plug & Play – no need for any user configuration
- DIN rail mountable – quick to install and remove for maintenance
- RJ45 ports/TAA support 1Gb speeds
- Integrated mains power supply with 54V<sub>DC</sub> @ 90W output
- Supports 15W, 30W, 60W, and 90W PoE
- Integrated surge protection with up to 20kA discharge capability for maximum protection in harsh environments
- Designed in the USA & UK. Manufactured in the United Kingdom
- Lifetime Support Warranty

# Specifications.

## Standards.

IEEE802.3i	10Base-T
IEEE802.3u	100Base-TX
IEEE802.3ab	1000Base-T
IEEE802.3af	15W PoE
IEEE802.3at	30W PoE+
IEEE802.3bt	60 & 90W PoE
Jumbo Frames	Transparent to Jumbo Frames
VLAN Support	Transparent to VLAN traffic
Multicast Support	Transparent to Multicast traffic

## Interface.

LED Indicators	Power PoE
RJ45 Ports	2x 10/100/1000T(X) RJ45 with 2 kV Isolation Protection
Mains Power	1x IEC C14 Socket with locking security bracket

## Power.

Power Inputs	1
Input Voltage	85-264V <sub>AC</sub> or 120-370V <sub>DC</sub>
Input Frequency	47-63 Hz
Input Current	2A (115V <sub>AC</sub> ) / 1A (230V <sub>AC</sub> )
Power Consumption	2W Max (without PoE Load)
Integrated PSU Type	54V <sub>DC</sub> @ 90W (Refer to derating chart)
PSE Modes	Mode A, Mode B
Protection	Overload Current

## Packaging.

Shipping Weight	1.03kg / 2.27lb
Dimensions:	(W x D x H) 220 x 170 x 80 mm 8.66 x 6.69 x 3.15 in

## Surge Protection\*.

AC Surge Protection:	
Line-Earth	±4KV <sub>1.2/50µs (8/20µs)</sub>
Line-Line	±2KV <sub>1.2/50µs (8/20µs)</sub>
RJ45/PoE Surge Protection:	
Technology	GDT
Nominal Line Voltage	48-57V <sub>DC</sub>
Max DC Voltage	75V <sub>DC</sub>
Protection Level	75V <sub>DC</sub> (C3 Category Line/Line)
Impulse Current	2kA (D1 Category 10/350µs x 1)
Line/Line Nominal	
Discharge Current	2kA (C2 Category)
Line/Earth Nominal	
Discharge Current	10kA (C2 Category 8/20µs x 10)
IEC 61000-4-5 (Surge)	20kA (8/20µs x 1)
Pinout	(1-2)(3-6)(4-5)(7-8)
Failsafe Mode	Short-Circuit / Cut-Off
Disconnect Indicator	Transmission Interrupt

\*Earth must be connected for protection

## Mechanical.

Housing	Anodised Aluminium
Dimensions:	(W x D x H)
(Excluding Wall Brackets)	65 x 88 x 107 mm 2.56 x 3.46 x 4.21 in
IP Rating	IP40
Installation	Wall Mount or DIN-Rail
Weight	0.66kg / 1.46lb

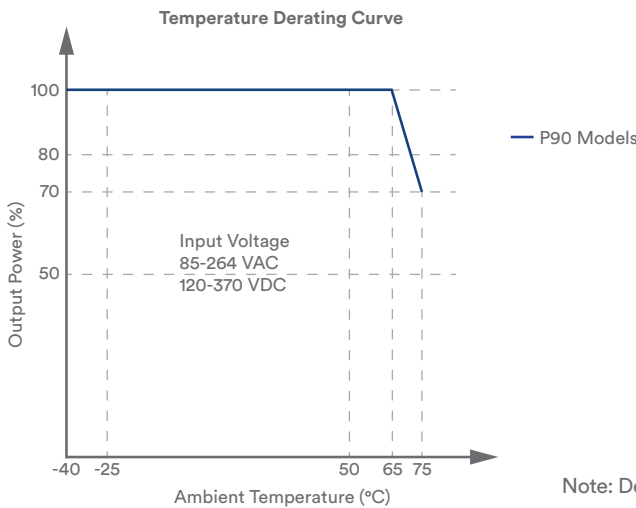
## Environmental.

Operating Temp.	-40 to +75°C / -40 to +167°F
Storage Temp.	-40 to +85°C / -40 to +185°F
Humidity	5% to 95% (non-condensing)
MTBF	>300,000 hours
MTBF Standard	MIL-HDBK-217F GF 25°C
Heat Dissipation	109 BTU/h (30W PoE) 212 BTU/h (60W PoE) 331 BTU/h (95W PoE)
Cooling	Passive Cooling
Noise Level	0 dBA

# Specifications.

<b>Regulatory.</b>		Shock	EN 61000-4-11 (Dips)
Safety	EN 62368-1 Class I	Free Fall	IEC 60068-2-27
EMI	EN 55032 Class B CISPR 32	Vibration	IEC 60068-2-32
EMS	FCC Part 15B Class B	Surge	IEC/EN 61643-21
	EN 61000-4-2 (ESD)	Environmental	Reach
	EN 61000-4-3 (RS)		RoHS
	EN 61000-4-4 (EFT)	Supply Chain	WEEE
	EN 61000-4-5 (Surge)		NDA & TAA Compliant
	EN 61000-4-6 (CS)	Designed to meet NEMA TS2 & EN 50121-4	

# Product Characteristic Curve.



Note: Derating Chart Applies To >60W Power Levels Only

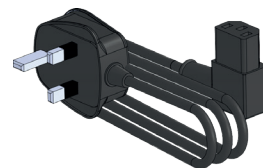
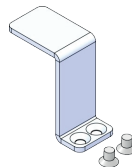
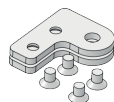
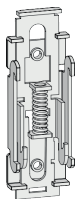
# Part Numbers.

## 1Gb Industrial PoE Injectors With Integrated Mains PSU

SNI-1PI-PS	Industrial 1 Port PoE Injector, 1 x 10/100/1000Base-T(x) RJ45 Port (Input), 1 x 10/100/1000Base-T(x) RJ45 Port With 802.3bt 30/60/90W PoE (Output), 90W PSU
------------	---

# Included Accessories.

- DIN Rail Adapter
- Wall Mounting Brackets
- IEC Plug Locking Bracket
- Left Angle IEC Cable
- Rear Mounted Metal DIN Rail Clip & Screws For DIN Rail Mounting
- 2x Wall Mounting Brackets & Screws For Wall / Surface Mounting
- Angled Locking Bracket & Screws To Secure The Included Left Angle IEC Line Cord
- Region Specific UK/EU/US Left Angled IEC Line Cord



In a continuing effort to improve and advance technology, product specifications are subject to change without notice. Please visit [www.amgsystems.com](http://www.amgsystems.com) for the latest product specifications.

Proud to be a British Manufacturer