

5MP 16:9 New Camera

2501-S2 Series New Product Release

Release Models

Motorized Lens



HAC-HFW2501TU-Z-A-27135-S2



HAC-HDBW2501R-Z-27135-S2



HAC-HDW2501T-Z-A-27135-S2

Fixed Lens



HAC-HFW2501T-I8-A-0360B-S2




HAC-HFW2501E-A-0360B-S2

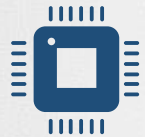
Quick-to-install



HAC-HDW2501TMQ-A-0280B-S2

 Order From China Only

Why 2501-S2 Series Better?



5MP 16:9 Sensor

Undistorted 16:9 original output restores true image



Real-time

5MP@25fps achieves fluent visual experience



Larger Horizontal FOV

Up to 111° horizontal angle presents rich information



Quick-to-install

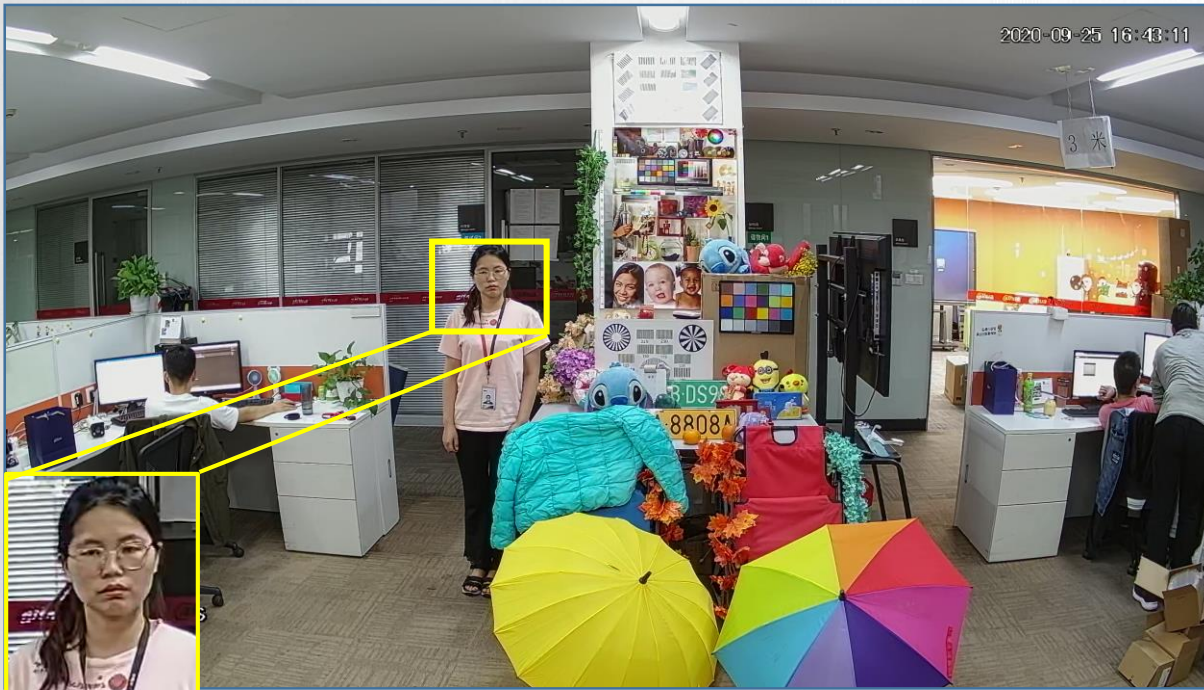
Quick-to-install camera saves labor costs

Original Image

Avoiding image distortion, the 5MP 16:9 camera presents far better clarity and clearer details compared to previous 5MP 4:3 product, which makes it a better choice for collecting valid information.

2501-S2 Series

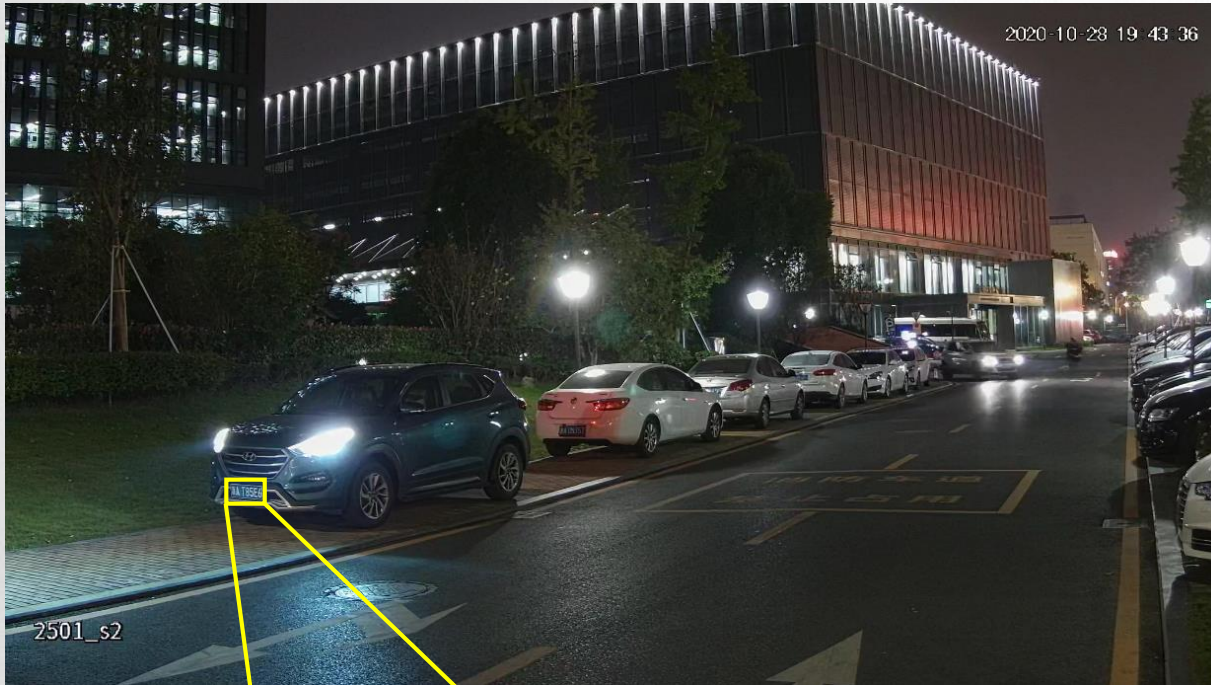
Previous 2501



Super Clarity

2501-S2 camera supports Starlight feature by adopting high performance sensor and F1.6 large aperture lens, which makes it a better choice for collecting valid information.

2501-S2



Previous 2501



Large FOV

2501-S2 16:9 camera offers extremely wide horizontal field of view. Especially for 2.8mm lens models, whose horizontal FOV can reach up to 111 degree.



2501-S2 Series



Previous 2501

Image Comparison

Compared to previous 2501 series, the new 5MP 16:9 camera provides brighter image and richer color in the lowlight environment.



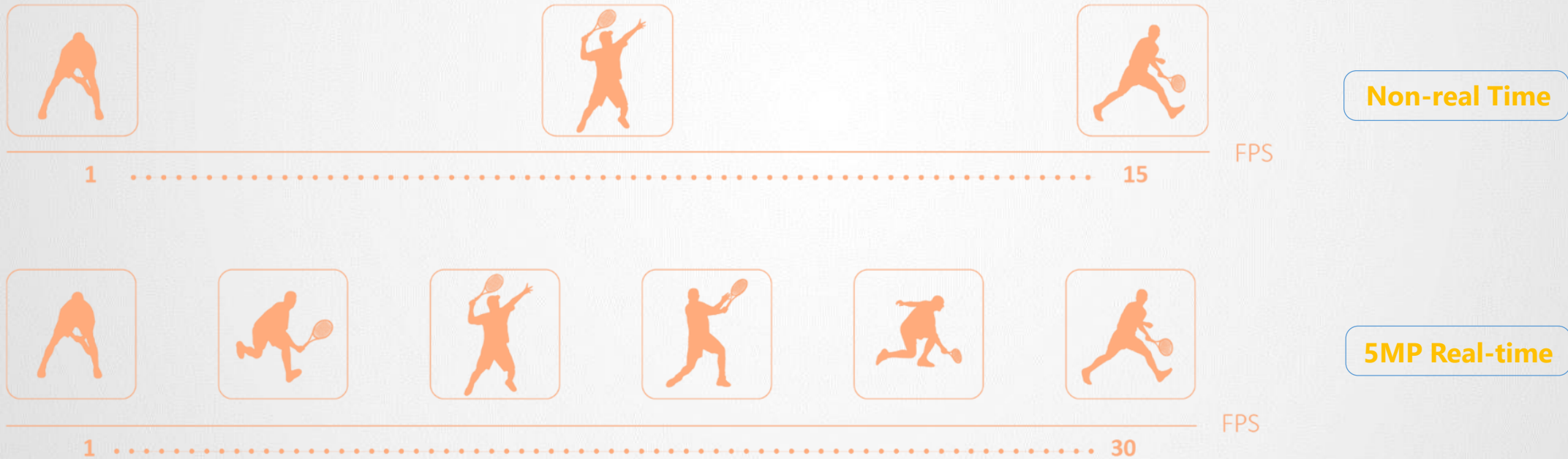
2501-S2 Series



Previous 2501

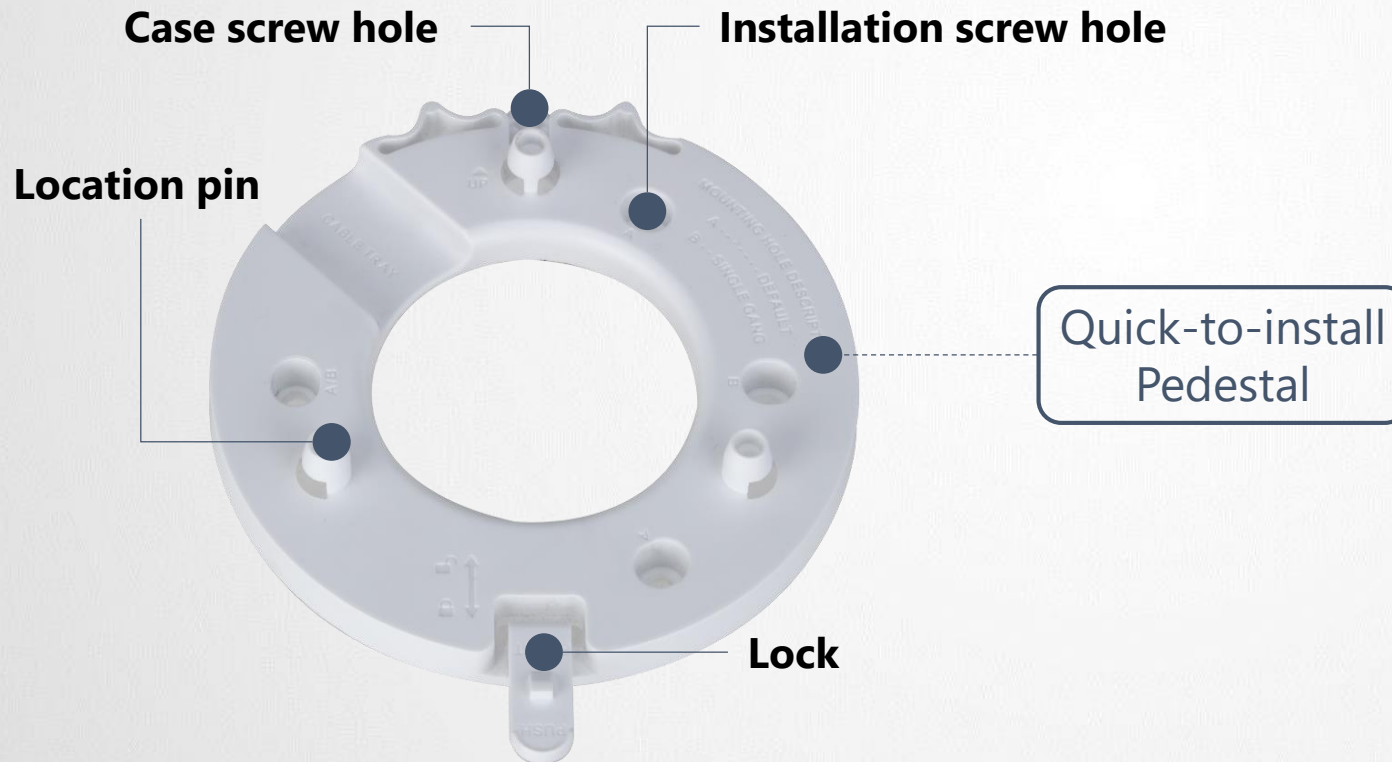
Real-time

2501-S2 camera supports 5MP@25fps, compared to previous it provides more fluent visual experience and better restores the monitoring scene.





Quick-to-Install

Quick-to-install design is well applied in the new camera series. Users can install an eyeball camera by simply clapping on. Quick-to-install structure remarkably saves time and labor cost.



Specification

	 HDCVI 6.0 2501-S2 Series	 Old 2501 Series
Image Aspect Ratio	16:9 video output No distortion, no image quality loss	4:3 video output Stretch and Distortion
Frame Rate	5MP@25fps (Real-time)	5MP@20fps
Minimum Illumination	0.001Lux/F1.6	0.005Lux/F1.6
Lens Aperture	F1.6	F1.6
FOV-H	Up to 111 degree (2.8mm)	Up to 98 degree (2.8mm)
Quick-to-install Structure	Yes Saving time and labor cost	No



THANK YOU

2501-S2 16:9 Output Achieves Undistorted Image